



TIIG

INJURY SURVEILLANCE IN THE NORTH WEST OF ENGLAND

Injury attendances to Manchester Royal Infirmary Emergency Department

April 2013 to March 2014

This report summarises recorded injury attendances to Manchester Royal Infirmary Emergency Department (ED) between April 2013 and March 2014.

Between April 2013 and March 2014 there were 21,515 injury attendances to Manchester Royal Infirmary ED. Males accounted for six in ten (60%) of all attendances. The month with the highest attendances was June (n=2,246) and the lowest was November (n=1,451) (**Figure 1**). The majority (71%) of injury attendances were recorded as other accident; Road traffic collision (RTC) accounted for the highest proportion (10%) of specified injury groups followed by sports injury and assaults (both 8%) (**Table 1**).

For all injuries, the highest proportion of attendances were for persons aged 20-34 (37%) and 5-19 (22%) (**Figure 2**). Fifty-six percent of assault attendees were aged 20-34. Over four in ten (43%) per cent of RTC attendees were aged 20-34. Six in ten (60%) of sports injury attendees were aged 20-34 (**Figure 3**).

Table 2 shows the arrival methods of attendances at Manchester Royal Infirmary ED. Almost eight in ten (79%) arrived by means other than an ambulance, while approximately one in five (21%) arrived by ambulance.

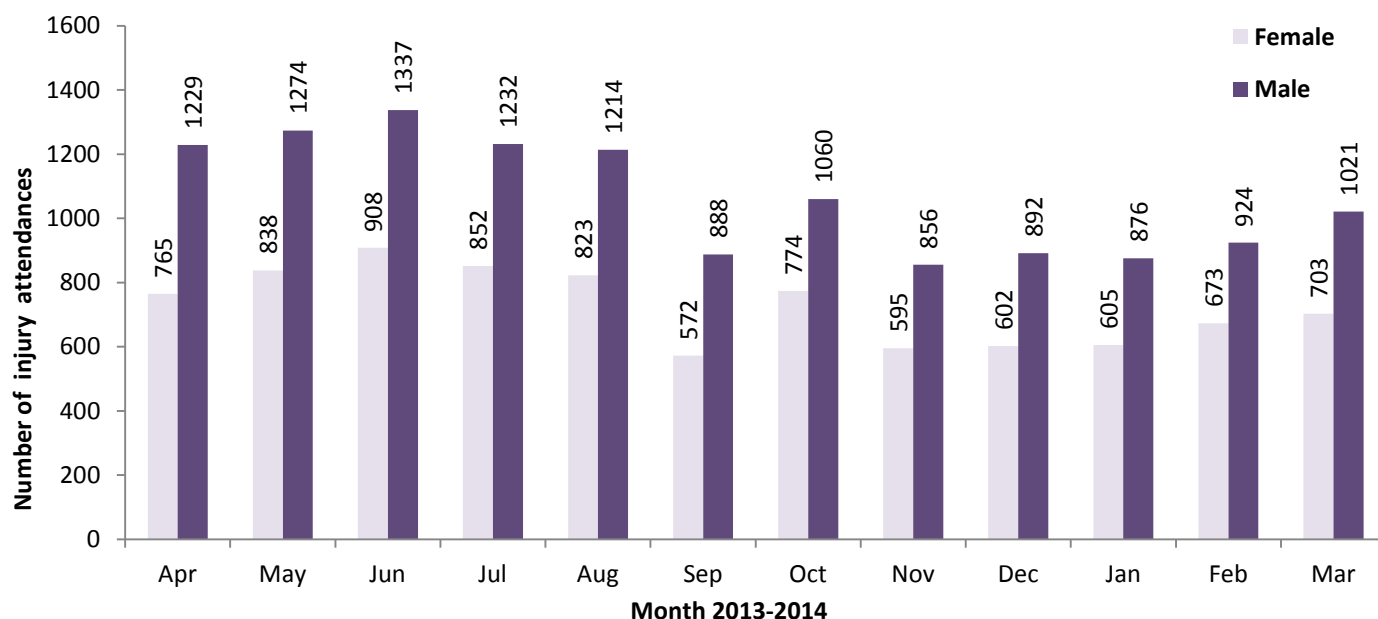
The disposal of a patient can give an indication of the severity of the injuries sustained. Forty-five percent

of attendees were discharged, almost a third (32%) were referred and 12% were admitted (**Table 3**). Almost six in ten (58%) of RTC attendees were discharged while 10% were admitted. Over a third (35%) of deliberate self-harm (DSH) attendees were admitted (**Table 4**).

Table 5 shows the ethnicity of attendees to Manchester Royal Infirmary ED. Over half (54%) were white, 8% were Pakistani and 7% were black.

Table 6 presents data for assault attendees to Manchester Royal Infirmary ED. Almost three-quarters (74%) of assault attendances were male and 56% were aged between 20 and 34 years.

Figure 1: Manchester Royal Infirmary ED: Total injury attendances by gender and month, April 2013 to March 2014*

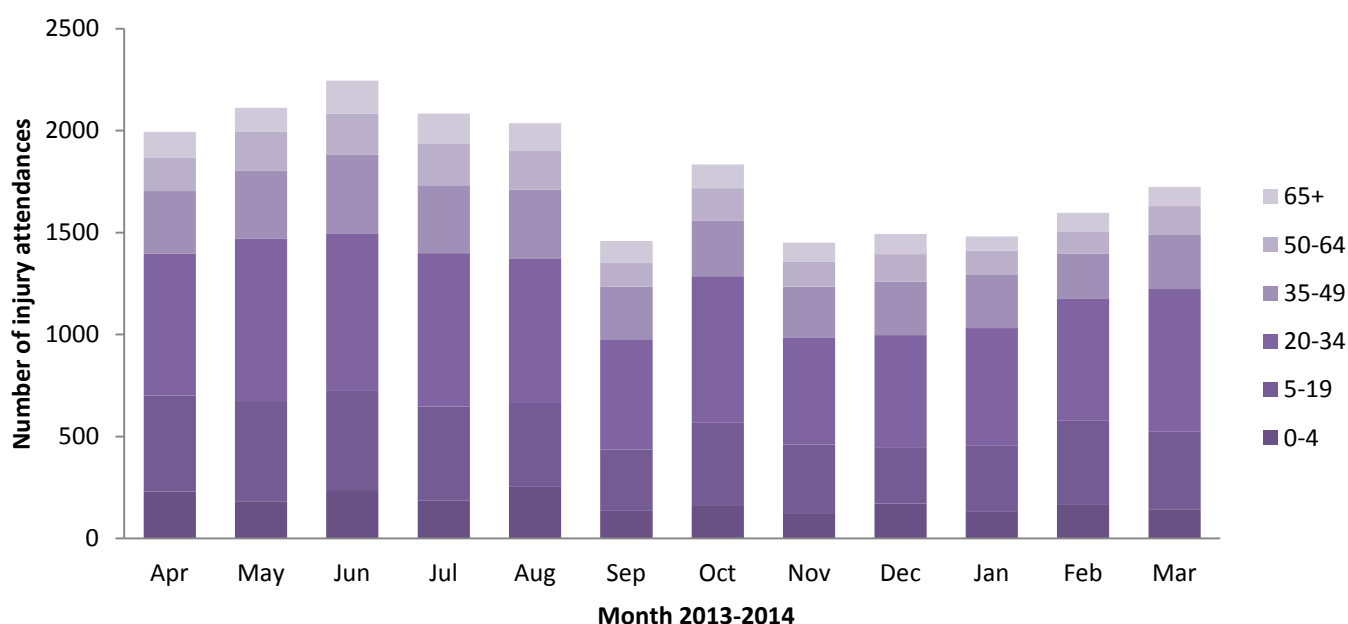


*There were two attendances where gender was recorded as unknown

Table 1: Manchester Royal Infirmary ED: Total injury attendances by injury group and month, April 2013 to March 2014

Injury group	Apr	May	Jun	Jul	Aug	Sep	Oct	Nov	Dec	Jan	Feb	Mar	Total	%
Other accident	1478	1536	1668	1562	1492	1040	1287	999	1015	988	1117	1188	15370	71
Road traffic collision	153	183	231	208	215	154	194	200	196	203	145	166	2248	10
Sports Injury	202	200	136	141	121	118	169	116	110	105	149	186	1753	8
Assault	123	144	160	136	174	125	146	124	149	145	143	155	1724	8
Deliberate self-harm	39	49	51	37	35	23	38	12	24	40	43	29	420	2
Total	1995	2112	2246	2084	2037	1460	1834	1451	1494	1481	1597	1724	21515	100

Figure 2: Manchester Royal Infirmary ED: Total injury attendances by age group and month, April 2013 to March 2014^



^ There were six attendances where age was recorded as unknown

Figure 3: Manchester Royal Infirmary ED: Total injury attendances by age group and injury group (excluding other injury), April 2013 to March 2014

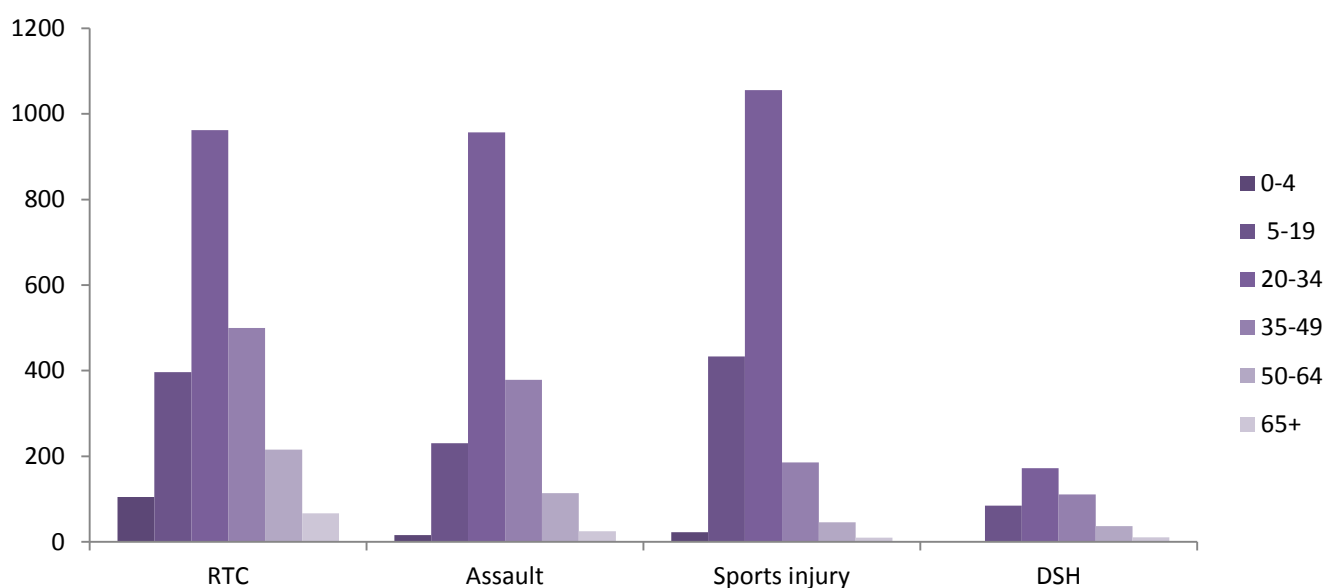


Table 2: Manchester Royal Infirmary ED: Total injury attendances by mode of arrival and month, April 2013 to March 2014

Arrival mode	Apr	May	Jun	Jul	Aug	Sep	Oct	Nov	Dec	Jan	Feb	Mar	Total	%
Other	1647	1707	1800	1639	1571	1193	1452	1153	1173	1157	1258	1352	17102	79
Ambulance	348	405	446	445	466	267	382	298	321	324	339	372	4413	21
Total	1995	2112	2246	2084	2037	1460	1834	1451	1494	1481	1597	1724	21515	100

Table 3: Manchester Royal Infirmary ED: Total injury attendances by method of disposal and month, April 2013 to March 2014

Disposal	Apr	May	Jun	Jul	Aug	Sep	Oct	Nov	Dec	Jan	Feb	Mar	Total	%
Discharged	888	842	1001	841	929	662	832	653	695	720	766	841	9670	45
Referral/follow up	646	740	724	741	637	443	583	460	442	431	473	525	6845	32
Admitted	227	278	265	254	275	175	206	172	195	190	194	237	2668	12
Other	234	252	256	248	196	180	213	166	162	140	164	121	2332	11
Total	1995	2112	2246	2084	2037	1460	1834	1451	1494	1481	1597	1724	21515	100

Table 4: Manchester Royal Infirmary ED: Total injury attendances by method of disposal and injury group (excluding other injury), April 2013 to March 2014

Disposal	RTC		Assault		DSH		Sports injury		Total	
	n	%	n	%	n	%	n	%	n	%
Discharged	1311	58	670	39	91	22	738	42	2810	46
Referral/follow-up	572	25	473	27	124	30	873	50	2042	33
Admitted	234	10	294	17	146	35	68	4	742	12
Other	131	6	287	17	59	14	74	4	551	9
Total	2248	100	1724	100	420	100	1753	100	6145	100

Table 5: Manchester Royal Infirmary ED: Total injury attendances by ethnicity and month, April 2013 to March 2014

Ethnicity	Apr	May	Jun	Jul	Aug	Sep	Oct	Nov	Dec	Jan	Feb	Mar	Total	%
White	806	803	859	1273	1251	892	1139	838	901	882	937	1046	11627	54
Not known	608	738	751	49	53	25	51	50	41	41	47	65	2519	12
Other ethnic group	133	115	90	189	162	119	206	187	155	193	197	189	1935	9
Pakistani	156	146	182	181	164	124	119	122	133	129	135	124	1715	8
Black	114	128	142	166	187	128	124	109	107	80	115	113	1513	7
Mixed	57	58	68	78	68	53	60	32	54	43	53	46	670	3
Asian other	29	39	45	56	65	54	55	42	38	32	38	44	537	2
Indian	27	23	25	35	27	24	31	21	25	33	23	36	330	2
Chinese	13	16	17	21	23	18	21	26	20	19	23	23	240	1
Not stated	30	35	46	16	13	12	10	8	8	18	17	16	229	1
Bangladeshi	22	11	21	20	24	11	18	16	12	11	12	22	200	1
Total	1995	2112	2246	2084	2037	1460	1834	1451	1494	1481	1597	1724	21515	100

Table 6: Manchester Royal Infirmary ED: Total assault attendances by age group and gender, April 2013 to March 2014^{1,2}

Gender	Assault attendees (n=1,724)		All injuries (n=21,515)
	n	%	%
Female	447	26	40
Male	1276	74	60
Age group			
0 - 4	16	1	10
5 - 19	231	13	22
20 - 34	957	56	37
35 - 49	379	22	16
50 - 64	114	7	9
65 plus	25	1	6

Published April 2014
 Jennifer Brizell (TIIG researcher)
 Centre for Public Health, Faculty of Education, Health and Community, Liverpool John Moores University
 2nd Floor, Henry Cotton Campus, 15-21 Webster Street, Liverpool, L3 2ET
 Tel: 0151 231 4500 Email: j.s.brizell@ljmu.ac.uk
 Website: www.tiig.info (please note all data requests should be made through the TIIG website)
 Twitter: [@TIIG_CPH](https://twitter.com/TIIG_CPH)

¹ There was one assault attendance without a gender recorded

² There were two assault attendances without an age recorded